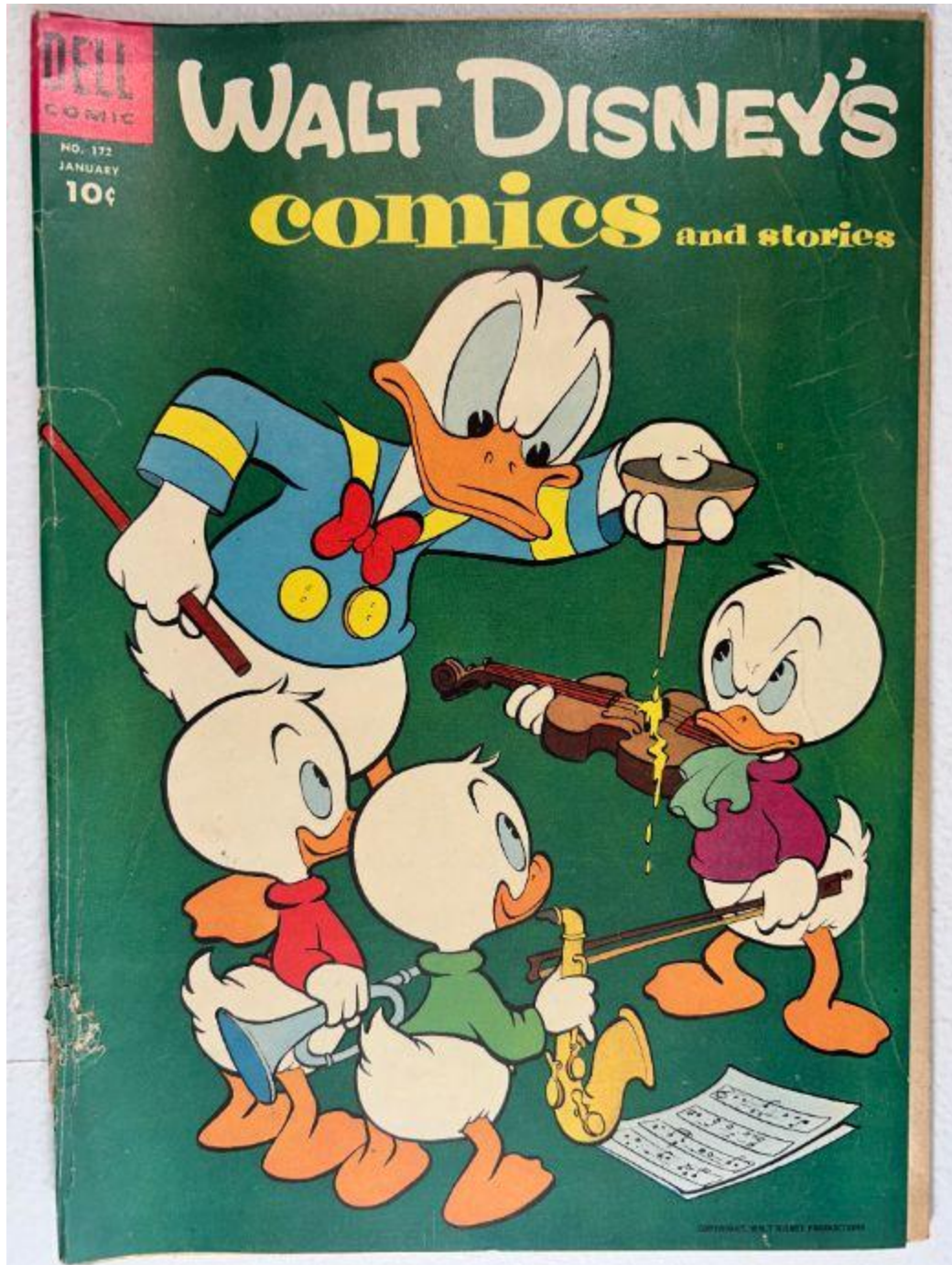


■ **Walt Disney's Comics and Stories – Vol. 15 No.4  
(January 1953)**

Evaluation Date: April 3, 2026



# SUMMARY OF OBSERVATIONS

This comic retains the front cover, back cover, centerfold, and all photographed interior pages. Overall visual presentation is strong, with the front cover showing vivid color saturation and retained surface gloss. Interior pages display clear artwork with consistent age-related toning. The spine remains intact and continuous, though a slight roll is visible.

Condition issues are localized. The front cover shows **a distinct area of paper loss along the lower edge** with exposed underlying paper layers. The spine exhibits **fine vertical cracking** and a **mild roll**, without long splits. Both staples are present and embedded, with **visible oxidation and surrounding paper disturbance**. Some interior pages show **darkening along the fore-edge**, most noticeable near the front of the book. The back cover shows **a small area of writing in the upper-left corner**. The brittleness test image shows a **single page gently flexed**, forming a smooth arc with no visible fiber fracture on the lifted page.

---

## FRONT COVER — OBSERVATIONS

### Photo Condition & Quality:

Image is sharp and evenly lit; edges, corners, and spine are visible. Resolution is sufficient to assess gloss, edge defects, and spine condition.

### Observations:

- Strong color saturation across the cover field.
- Surface gloss clearly visible.
- Along the **lower edge**, a **paper loss area** is visible, measuring approximately **12–18 mm in width** and extending **~3–5 mm upward**.
- The loss exposes underlying brown paper fibers with irregular edges.
- Along the spine edge, **fine vertical cracks** are present, approximately **2–4 mm** in length.
- Corner rounding present, approximately **3–5 mm** inward.
- No writing observed on the front cover.

### Overall Impression:

Front cover presents strongly but shows **localized lower-edge paper loss and light spine cracking**.

---

# BACK COVER — OBSERVATIONS

## Photo Condition & Quality:

Image is clear and evenly lit with full edges visible. Resolution sufficient to assess surface condition and markings.

9/20

"Hey kids! We're super and you can have a circus with us!"

**MARY AND CLIFFY**  
HARTLINE THE CLOWN

**New Dancing Puppets**

WE WALK  
WE DANCE WE STRUT AND  
CLOWN-WE DO ANYTHING  
YOU WANT US TO!

GET US BOTH FOR  
ONLY 25¢ AND  
TWO WRAPPERS FROM  
SNICKERS BARS!

What fun! Anyone can work these keen Mary Hartline and Cliffy the Clown Dancing Puppets. Put on your own TV Show the day you get them. Or amaze the family by making them do what Mary and Cliffy do on "Super Circus."

Ask Mom or Dad how you can earn a quarter. Then send it along with two wrappers from Mars SNICKERS bars to SUPER CIRCUS PUPPETS, Dept. D, Box 7599, Chicago, Ill. But do it right away. You won't want to miss a minute of fun like this!

Mary Hartline and Cliffy the clown star as Mars "Super Circus" on ABC-TV, Sundays at 5 P.M. EST.

This offer good only in U.S.A.

**SEND FOR YOURS TODAY!**

CUT HERE

SUPER CIRCUS PUPPETS, Dept. D,  
Box 7599,  
Chicago 77, Illinois

Enclosed is 25¢ and two wrappers from SNICKERS bars. Please rush my "Mary and Cliffy" Puppets.

Name \_\_\_\_\_  
Street \_\_\_\_\_  
City \_\_\_\_\_ Zone \_\_\_\_\_ State \_\_\_\_\_

Marvelous Candy Bars from **MARS**



## Observations:

- Uniform age toning across the back cover.
- In the **upper-left corner**, a **small handwritten marking** is visible, confined to a limited area and not overlapping printed text.
- Paper surface appears flat with no cockling.
- Edge wear along the bottom and spine edges affects approximately **5–10 mm intermittently**.
- Corner rounding approximately **3–5 mm** inward.
- No paper loss observed.

## Overall Impression:

Back cover remains intact with **light wear and a small area of writing**.

# INTERIOR PAGES — OBSERVATIONS

## Photo Condition & Quality:

Images are sharp and evenly lit; margins and edges visible. Resolution sufficient to assess toning and edge condition.





### Observations:

- Interior pages show **tan to light-tan paper coloration**.
- **Darkening along the fore-edge** is visible on several pages, more pronounced toward the front of the book; the darkened band measures approximately **5–12 mm inward** from the edge.
- Artwork remains clear with strong color and crisp linework.
- No interior tears or paper loss observed.
- Minor corner bends visible on some pages, approximately **3–5 mm inward**.
- No interior writing observed.

### Overall Impression:

Interior pages are **clean and readable**, with **localized fore-edge darkening** and minor handling wear.

# CENTERFOLD — OBSERVATIONS

## Photo Condition & Quality:

Image is in focus and evenly lit, showing both pages and the central gutter clearly.



### Observations:

- Both staple positions visible.
- Surrounding paper shows **stress and minor tearing** at the staple locations.
- No complete separation of the centerfold observed.
- Fold line shows light compression.

### Overall Impression:

Centerfold remains attached but shows **localized damage at staple points**.

---

## SPINE — OBSERVATIONS

### Photo Condition & Quality:

Image is sharp and well lit, showing the full spine length.



### Observations:

- Spine is continuous with a **slight roll** visible.
- Several **fine vertical cracks** present, approximately **2–4 mm** in length.
- No long splits or exposed interior page layers observed.

### Overall Impression:

Spine is structurally intact with **light cracking and mild roll**.

---

## UPPER STAPLE — OBSERVATIONS

### Photo Condition & Quality:

Macro image is sharp and evenly lit.



### Observations:

- Metal staple present and embedded.
- **Oxidation visible**, with darkened metal and slight discoloration of surrounding paper.
- Minor paper disturbance around the staple, extending approximately **2–3 mm**.

### Overall Impression:

Upper staple is present with **oxidation and minor surrounding paper impact**.

---

# LOWER STAPLE — OBSERVATIONS

## Photo Condition & Quality:

Macro image is clear and properly framed.



## Observations:

- Metal staple present and embedded.
- Oxidation comparable to the upper staple.
- Surrounding paper shows similar minor disturbance, approximately **2–3 mm**.

## Overall Impression:

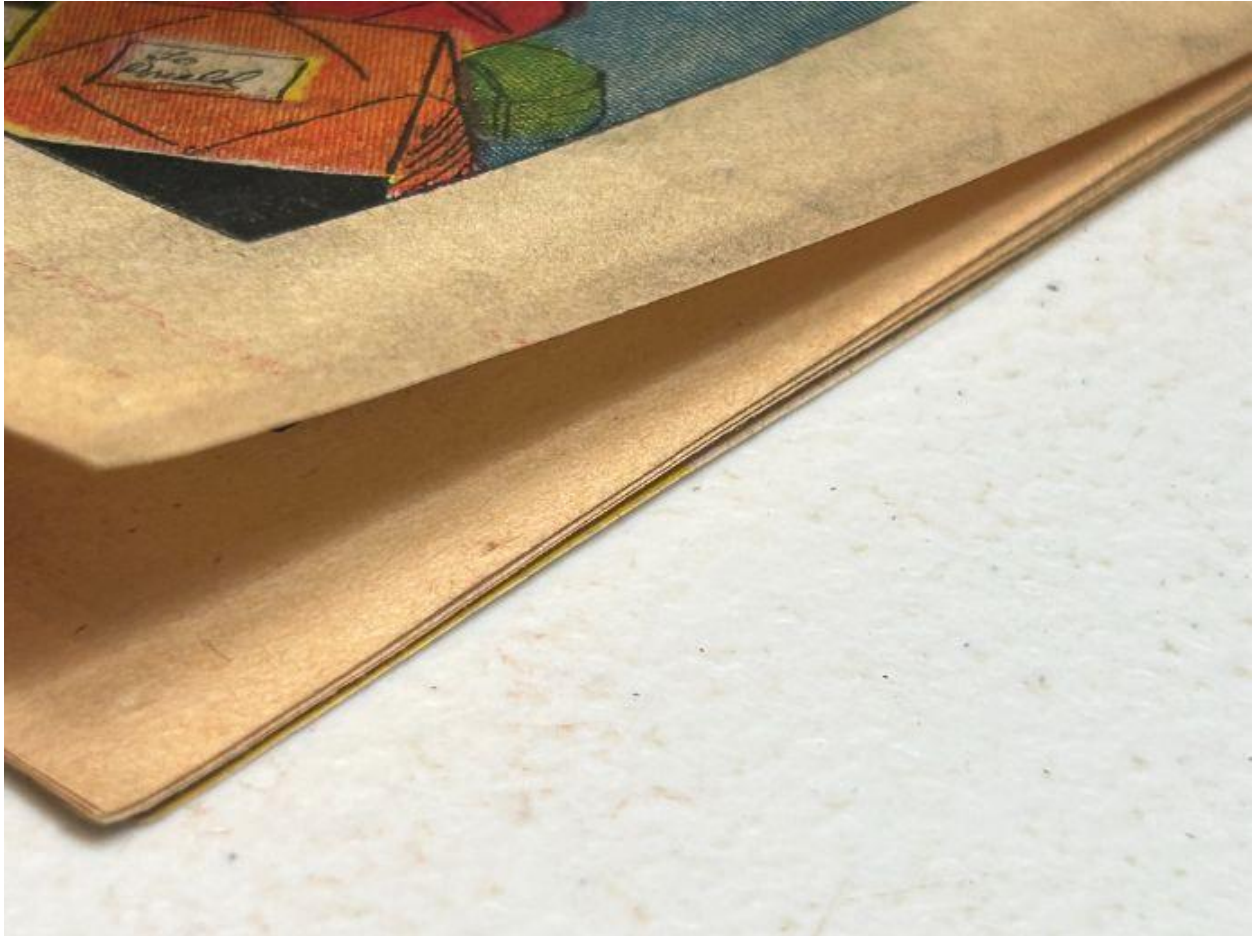
Lower staple is present with **oxidation and minor surrounding paper impact**.

---

# BRITTLENESS TEST — OBSERVATIONS

## Photo Condition & Quality:

Image shows a **single interior page lifted above flat underlying pages**. Slight softness at the extreme corner does not impede evaluation.



## Observations (confined to the lifted page):

- The lifted page bends upward in a **smooth, shallow arc**.
- No visible fiber fracture, splitting, or flaking along the bend line.
- Paper surface appears continuous at the point of flex.

## Overall Impression:

The tested page demonstrates **retained flexibility** and does **not exhibit brittle behavior** under the observed flex.